

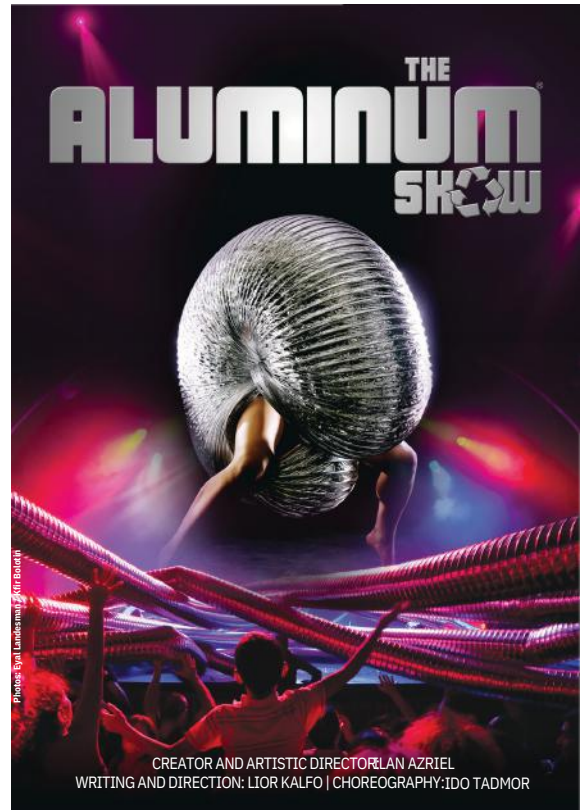


2024-2025 Student Outreach Free School & Community Shows

**February 12, 2025 at 6:30
(Community)
February 13, 2025 at
9:30/12:30 (School)
Duration: 60 minutes**

**Von Braun Center
Mark C. Smith Concert Hall**

**Recommended for all ages
Free admission -
Reservations required!**



THE
ALUMINUM[®]
Study Guide **SHOW**



TO THE EDUCATOR

Thank you for choosing to explore
“The Aluminum Show” with your students.

We appreciate your commitment to providing engaging and educational experiences that highlight creativity, environmental awareness, and the transformative power of art.

This study guide is designed to enhance your students’ understanding and enjoyment of the performance.

We hope it sparks their imaginations and inspires them to see the world in new and innovative ways.

TABLE OF CONTENTS

Introduction



Recycling Elements



Examples and descriptions of materials used



Artistic elements



Combining The artistic Elements



Audience participation and breaking the fourth wall



Activities and Discussion questions



Conclusion

Introduction

“The Aluminum Show” is a unique performance art experience that combines dance, puppetry, acrobatics, and visual effects, all revolving around the use of aluminum in its many forms. This guide is designed to help students and educators explore the themes, artistic elements, and technical aspects of the show, with a special focus on its recycling elements.

Objectives

- Understand the central themes of “The Aluminum Show.”
- Analyze the use of materials and visual effects in the performance.
- Explore the artistic and technical elements that make up the show.
- Encourage creative thinking and artistic expression.
- Promote awareness of recycling and environmental sustainability.

Background Information

“The Aluminum Show” was created by Ilan Azriel, a dancer and choreographer known for his innovative use of materials and technology in performance art. The show debuted in 2003 and has since toured internationally, captivating audiences with its unique blend of humor, creativity, and artistry. The show tells the story of an astronaut landing in a new and bizarre world. Slowly he discovers a magical world of ALUMINUM where he will go through amazing adventures of wonder, danger and amusement.

Themes and Concepts

- Transformation and Reuse:

The show emphasizes the transformation of everyday materials into art, highlighting themes of recycling and creativity.

- Human and Machine Interaction: Explore the relationship between humans and machines, often depicted through the interaction of dancers with aluminum tubes and other props.

- Imagination and Play: The performance encourages viewers to see the world through a lens of imagination and playfulness.

Recycling Elements

Material Choice:

All props and costumes are made from recycled aluminum and other recyclable materials. This choice underscores the importance of reusing materials and reducing waste.

Creative Reuse:

The show demonstrates creative ways to repurpose materials. For instance, aluminum tubes become snakes, Giraffes, Alligators and other animals, costumes, and even characters in the performance.

Environmental Message:

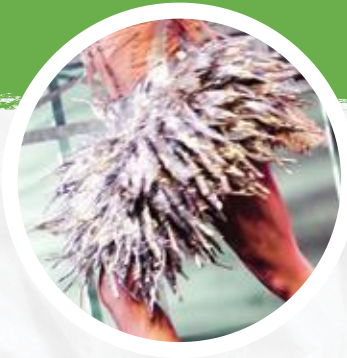
By using recycled materials, the show conveys a powerful message about environmental sustainability and the importance of recycling.

Educational Impact:

The show not only entertains but also educates audiences about the potential of recycled materials to create beauty and art.



Examples and Descriptions of Materials Used



1. Air Conditioning Tubes

Description:

Flexible aluminum tubes typically used in HVAC systems to direct airflow.

Use in the Show:

These tubes are manipulated by performers to create dynamic shapes and movements. They can mimic the appearance of different characters, animals or other creatures, and their flexibility allows for a wide range of choreographic possibilities and even to express different emotions throughout the show's story. The tubes are also used to represent different locations and experiences such as the ocean, the desert and weather phenomenon such as storms.

2. Kitchen Foil

Description:

Thin aluminum foil commonly used for cooking and food storage.

Use in the Show:

Kitchen foil is used to create costumes, props, and set pieces. Its reflective surface enhances the visual impact under stage lighting, creating dazzling effects and adding to the futuristic aesthetic of the performance.



3. Aluminum Sheets and Panels

Description:

Larger, more rigid pieces of aluminum used in construction and manufacturing.

Use in the Show:

These sheets and panels are used as backdrops, set pieces, and structural elements. They provide a sturdy, reflective surface that can be manipulated and transformed throughout the performance.

4. Wire and Mesh

Description:

Thin aluminum wires and mesh used in fencing and other applications.

Use in the Show:

Wire and mesh are used to create intricate costumes and props. They add texture and structure, allowing for complex and detailed designs that contribute to the overall aesthetic.

Artistic Elements



Choreography:

The dancers' movements are synchronized with and within the props and visual effects, creating a seamless integration of human motion and material manipulation.

Visual Effects:

The use of lighting, sound, and projections enhances the visual impact of the aluminum props.

Costumes and Props:

All costumes and props are made from aluminum and other recyclable materials, emphasizing the show's central theme of transformation.





Combining The artistic Elements

1. Choreography

Role:

The choreographed movements of the performers based on modern dance, ballet and even hip hop are meticulously designed to interact with the props and visual effects. The choreography transforms the aluminum materials into extensions of the performers' bodies, creating fluid and dynamic sequences that captivate the audience.

Impact:

The fluidity and precision of the choreography make the aluminum props come alive, turning inanimate objects into living, breathing parts of the performance.

2. Puppetry

Role:

Puppetry elements are integrated into the show, with performers manipulating aluminum tubes and other materials to create characters and creatures. This aspect adds a layer of storytelling and character to the performance. In our show, a human traveler visits the bizarre and funny world of ALUMINUM where he will experience a surprising adventure.

Impact:

Puppetry adds an element of surprise and wonder, as ordinary materials are transformed into expressive and engaging characters that interact with the audience and the performers.

3. Special Effects

Role:

Special effects, including projections, fog, and mechanized props, enhance the visual experience. These effects create an immersive environment that complements the choreography and puppetry.

Impact:

Special effects add depth and dimension to the performance, creating a multisensory experience that draws the audience into the world of "The Aluminum Show."

4. Lighting

Role:

Strategic lighting design is crucial in highlighting the reflective properties of aluminum. Different lighting techniques, such as spotlights, strobes, and color filters, are used to create mood and emphasize movement.

Impact:

The interplay of light and aluminum creates a mesmerizing effect, making the materials shimmer and come to life. Lighting helps to direct the audience's focus and enhances the overall visual impact of the performance.



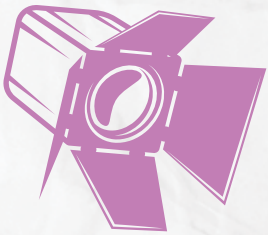
5. Set Construction

Role:

The set is constructed using aluminum sheets, panels, and other recyclable materials. The set design is flexible and modular, allowing for quick transformations between scenes.

Impact:

The innovative use of aluminum in set construction reinforces the themes of recycling and transformation. The set serves as both a functional space and a visual element that enhances the performance's aesthetic.



Audience Participation and Breaking the Fourth Wall

1. Audience Participation

Role:

Audience participation is a key component of “The Aluminum Show.” Performers often engage directly with the audience, inviting them to become part of the performance. This can include inviting audience members on stage, interacting with them from the stage, or even moving through the audience.

Impact:

Audience participation creates a more immersive and interactive experience. It breaks down the barrier between performers and spectators, making the audience feel like active participants rather than passive observers. This involvement can lead to a greater emotional connection to the performance and a more memorable experience.

2. Breaking the Fourth Wall

Role:

Breaking the fourth wall refers to the performance technique where performers acknowledge the audience’s presence, thereby “breaking” the imaginary wall that separates the stage from the audience. In “The Aluminum Show,” this technique is used to draw the audience into the world of ALUMINUM and create a sense of inclusion.

Impact:

By breaking the fourth wall, the performers create a more intimate and engaging atmosphere. This technique can elicit a range of emotions from the audience, including surprise, delight, and a sense of camaraderie with the performers. It helps to blur the lines between reality and performance, enhancing the overall impact of the show.

3. Feelings Created in the Audience

Connection and Engagement:

Audience participation and breaking the fourth wall foster a sense of connection and engagement. Viewers feel directly involved in the action, which can heighten their emotional investment in the performance.

Surprise and Excitement:

Unexpected interactions with the performers can create moments of surprise and excitement, adding to the dynamic energy of the show.

Joy and Amusement:

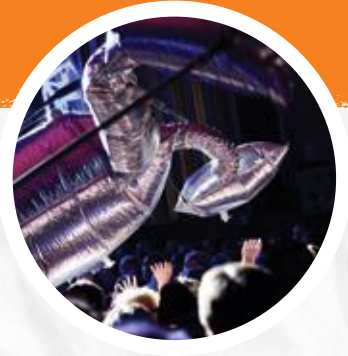
Participatory elements often incorporate humor and playfulness, evoking feelings of joy and amusement. These interactions can make the experience more enjoyable and memorable.

Empathy and Understanding:

By being part of the performance, audience members may gain a deeper understanding of the show's themes and messages. This direct involvement can make the environmental and recycling themes more impactful and personal.



Activities and Discussion Questions



1. Pre-Show Discussion:

- What do you expect to see in a show called "The Aluminum Show"?
- How can everyday materials be transformed into art?
- Can you think of other everyday materials that can be transformed into art?

2. Post-Show Discussion:

- What were your favorite elements of the performance? Why?
- How did the use of aluminum add to the overall experience of the show?
- What themes did you notice during the performance?
- How did the show's use of recycled materials impact your view on recycling and sustainability?
- How did audience participation and breaking the fourth wall affect your experience of the show?

3. Creative Activity:

- Aluminum Art: Create your own art project using aluminum foil or other recyclable materials. Discuss how you transformed the materials into art.
- Choreography Challenge: In small groups, create a short dance routine using props made from recyclable materials. Perform your routine for the class and discuss the creative process.
- Recycling Campaign: Develop a campaign to promote recycling in your school or community, using ideas inspired by "The Aluminum Show."

4. Research Project:

- Investigate other performances or art installations that use recyclable materials. Compare and contrast them with "The Aluminum Show."
- Explore the environmental impact of recycling aluminum and other materials. Present your findings to the class.

Conclusion

“The Aluminum Show” is a captivating example of how everyday materials can be transformed into extraordinary art. Through its innovative use of aluminum and other recyclable materials, the show challenges audiences to rethink their relationship with the environment and explore the boundless possibilities of creativity. By combining choreography, puppetry, special effects, lighting, and set construction, “The Aluminum Show” creates a mesmerizing and immersive experience that highlights the importance of recycling and environmental sustainability.

This study guide provides a comprehensive framework for understanding and appreciating “The Aluminum Show” while highlighting the significance of its recycling elements and the creative use of materials. Feel free to adapt the activities and discussions to suit the needs of your students.

THE
ALUMINUM
SHOW

